



# 2016 Child Care Provider Readiness



Seattle  
Office of Emergency  
Management







# Table of Contents

**Project Introduction**

**Page | 1**

**Inspection Reports  
Point-Based Scoring  
The Next Phase**

**Page | 2**

**Race and Social Justice  
Initiative**

**Page | 3**

**Washington  
Administrative Code  
Child Care Standards**

**Page | 4**

**Average Preparedness  
Score per Zip Code  
Chart**

**Page | 5**

**Number of Child Care  
Providers by Zip Code  
Chart**

**Page | 6**

**Percentage of Child  
Care Providers Meeting  
WAC Standards in 2016**

**Page | 7**

**Next Steps**

**Page | 8**

*We asked ourselves...*

# Are child care providers in Seattle prepared for disasters and other emergencies?

A 2016 article by KUOW (NPR) shined a spotlight on emergency preparedness within licensed child care programs in the City of Seattle. Most child care providers are not prepared for disasters and other emergencies. Utilizing the Race & Social Justice Initiative Toolkit, Seattle Office of Emergency Management is conducting a multi-stage project to determine the cause of gaps in readiness among child care providers. The following report provides a summary of the current state of child care readiness and suggested next steps for outreach & education among child care providers.

Compiled by Seattle Office of Emergency Management



Hazard mitigation, such as securing heavy objects, or moving them to ground level to prevent injuries and damage during an earthquake, has the lowest rate of compliance across the city.

## **Project Introduction**

In 2016, Seattle Office of Emergency Management set a goal of ensuring that licensed child care providers within the city limits were better prepared for disasters and emergencies. Based on compliance reports, spanning from 2012-2016 provided by the Department of Education and Early Learning, Seattle OEM has created an emergency preparedness rating system for licensed child care providers. The system is comprised of ten standards of emergency preparedness out of a total of nineteen standards that all providers must meet under Safety & Environment licensing requirements. Points are awarded for each standard based on compliance. The following report will outline the current state of child care provider readiness within the City of Seattle.



### **Inspection Reports**

Research was gathered by compiling all licensing compliance inspection reports from 2016. The State of Washington has set forth ten licensing standards within "Safety & Environment" that directly relate to emergency preparedness. Standards include actions such as creating a disaster plan, practicing monthly fire drills and quarterly earthquake drills, and ensuring that the facility is free of hazards such as potential falling objects and exit route obstructions. Each facility is marked with a "C" for Compliant, a D for "Discussed", or a "N" for Non-Compliant. If a facility is marked with a "D", this means that the facility was issued a compliance agreement, and is given the opportunity to bring their facility up to compliance within a specified timeframe.

### **Point-Based Scoring**

In order to better understand and analyze the readiness of licensed child care facilities, Seattle OEM developed a point-based scoring system for each of the ten emergency preparedness standards. If the provider was marked "Compliant," they received 1 point. If they were marked "Discussed," they received 0.5 points. If they were marked "Non-Compliant" they received 0 points. These sum of these numbers is equal to each provider's emergency preparedness score. For further analysis, providers were sorted by zip code. They were again sorted by preparedness score. The average of these scores was collected to provide insight into the readiness of each provider. Each provider's final score was compared to other providers and the Seattle average score of 7.4/10.

### **The Next Phase**

The point-based scoring system provided a clear numerical picture of the current state of readiness of child care providers within the city. In total, 190 licensed providers were assigned preparedness scores. Using a sample of eighteen providers, 6 of whom scored the highest, 6 whom have a median score of 5, and six whom scored the lowest) a survey will be conducted. The survey will seek to uncover the challenges impeding child care providers from meeting emergency preparedness standards. Phase II will convene stakeholders from across government, the community, and the child care industry to create an equitable, comprehensive, and succinct survey to uncover the possible causes of providers' failure to prepare across the city.

# OVER HALF OF THE CHILD CARE PROVIDERS IN THE CITY OF SEATTLE REPORT NOT HAVING A DISASTER PLAN FOR THEIR PROGRAM. TWO-THIRDS OF CHILD CARE PROVIDERS DO NOT MAINTAIN A HAZARD-FREE ENVIRONMENT.



## Applying the Race and Social Justice Initiative Toolkit

Seattle Office of Emergency Management chose the establishment of the Child Care Provider Readiness Project to apply the Race and Social Justice Initiative (RSJI) Toolkit to an emerging preparedness curriculum. The toolkit will

run parallel to the Child Care Provider Readiness Project to ensure that preparedness education for child care providers is delivered in an equitable way. Following the process of the RSJI Toolkit, the Seattle Office of Emergency Management will convene stakeholders, set outcomes, and plan for sustainability in the coming years.

## About the RSJI

The Seattle Race and Social Justice Initiative is a citywide effort to end institutionalized racism and race-based disparities in City government.

RSJI builds on the work of the civil rights movement and the ongoing efforts of individuals and groups in Seattle to confront racism. The Initiative's long term goal is to change the underlying system that creates race-based disparities in our community and to achieve racial equity.



## Washington Administration Code Child Care Standards

\*Pertaining only to safety and emergency preparedness standards.

**1. A comprehensive disaster plan**

**2. Fire safety records and evacuation plans, including diagram(s) of exit routes**

**3. Posting of disaster and fire plan requirement**

**4. A written disaster and fire plan is developed and implemented**

**5. Disaster and fire plans are annually reviewed by director and staff**

**6. Plans are reviewed and signed by parents when children are enrolled**

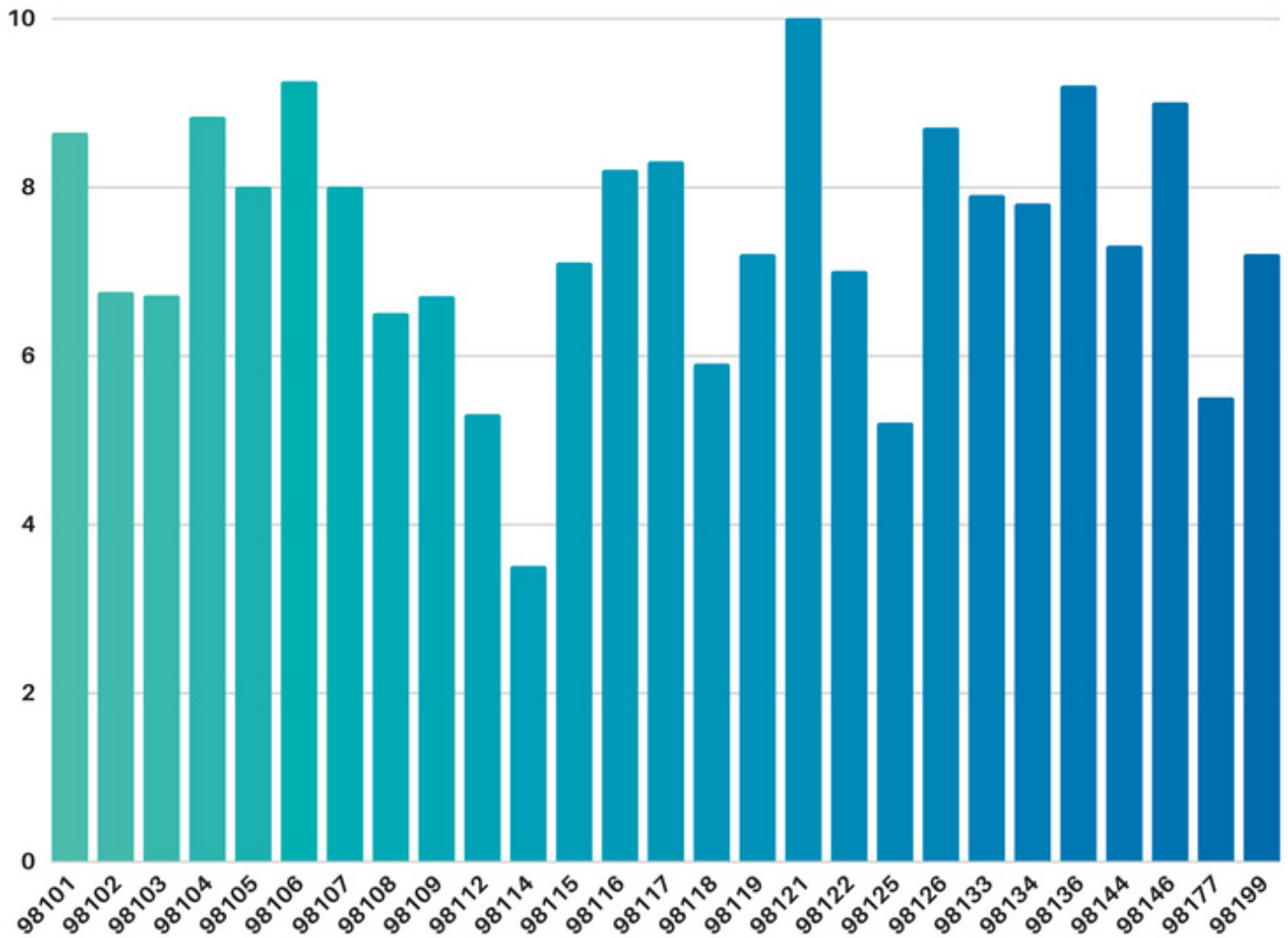
**7. A monthly fire and evacuation drill is conducted and documented**

**8. Quarterly disaster drills are conducted and documented**

**9. Environment is free from hazards that may cause injury**

**10. Presence of working flashlight/emergency lighting device**

### Average preparedness score per zip code



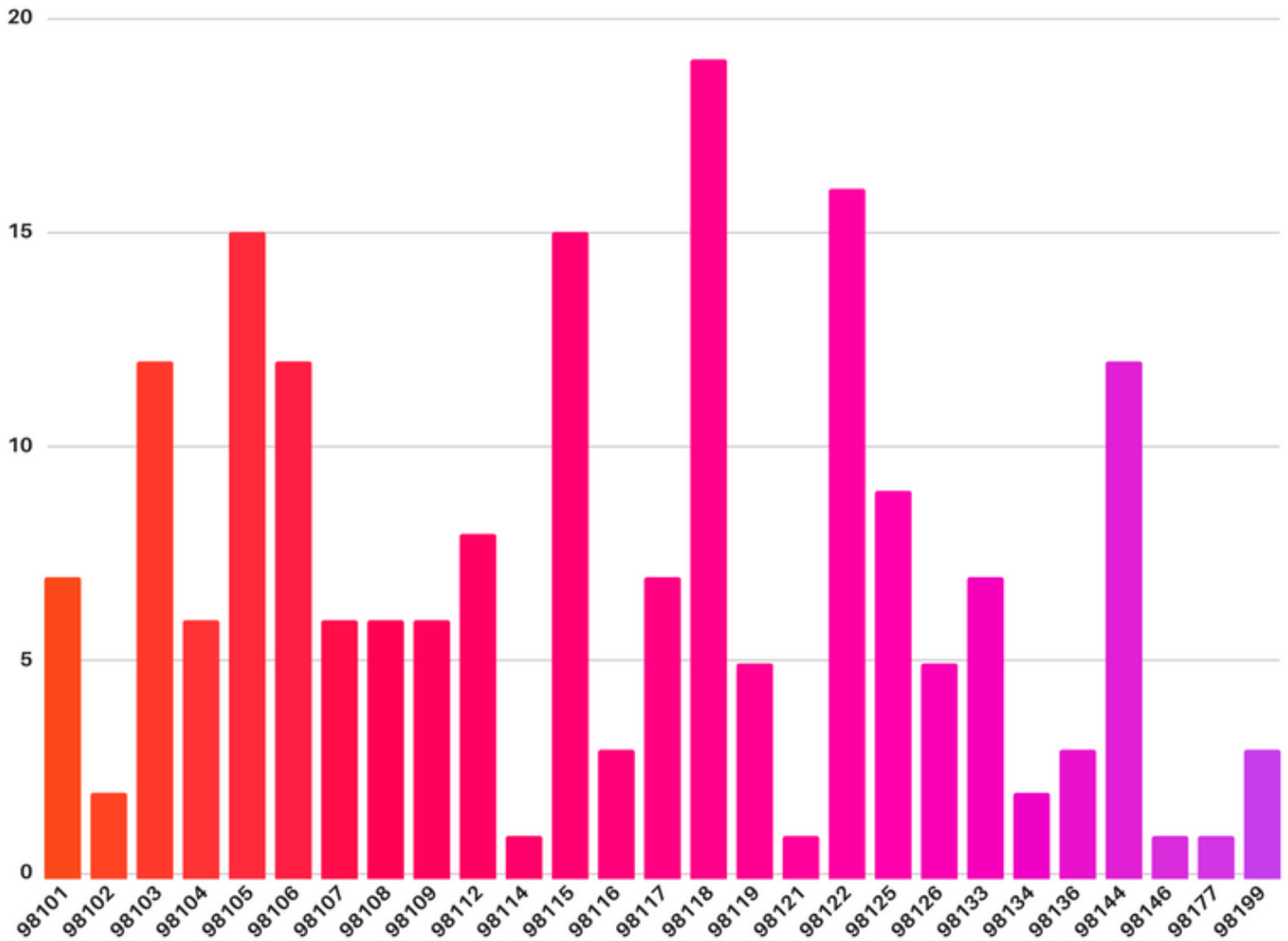
Zip Code	Score
98101	8.64
98102	6.75
98103	6.71
98104	8.83
98105	8.00
98106	9.25
98107	8.00
98108	6.50
98109	6.70

98112	5.30
98114	3.50
98115	7.10
98116	8.20
98117	5.90
98119	7.20
98121	10.00
98122	7.00
98125	5.20
98126	8.70

98133	7.90
98134	7.80
98136	9.20
98144	7.30
98146	9.00
98177	5.50
98199	7.20

**Overall Score in Seattle:**  
**7.40**

### Number of child care providers by zip code



Zip Code	Score
98101	7
98102	2
98103	12
98104	6
98105	15
98106	12
98107	6
98108	6
98109	6

98112	8
98114	1
98115	15
98116	3
98117	7
98118	19
98121	1
98122	16
98125	9
98126	5

98133	7
98134	2
98136	3
98144	12
98146	1
98177	1
98199	3

**Total active child care providers in Seattle:**  
**190**



## NEXT STEPS

### Stakeholder Involvement

The second phase of the Child Care Provider Readiness Project will involve identifying and convening stakeholders within the City of Seattle. Stakeholders will assist Seattle Office of Emergency Management in drafting appropriate language to use in the creation of a survey, which will ensure that the subsequent study is both equitable and able to be replicated in other jurisdictions in the state of Washington.

### Survey

The Seattle Office of Emergency Management will compile and conduct an emergency preparedness survey for licensed child care providers. The survey will be delivered to providers whom received the highest, median, and lowest scores throughout the city. Eighteen providers in total will be surveyed. Each licensed child care provider will be contacted to participate in the survey in a way that is convenient to the provider, whether that is in person, on the phone, or via email.

### Gap Analysis

Upon the completion of the survey, Seattle Office of Emergency Management will conduct a gap analysis. Survey and inspection report data will be analyzed to draw possible conclusions as to why providers fail to prepare for emergencies, and what limitations might exist within this study. The gap analysis will then inform Phase III of the project, in which emergency preparedness materials, training, and guidance will be distributed to licensed child care providers throughout the city of Seattle.





© 2017 Seattle Office of Emergency Management. Funded by FEMA, CFDA No. 97.067.  
This publication does not constitute an endorsement by FEMA or reflect FEMA's views.